

# 2018

The Race Director

Race Director Go

## [RACE DIRECTOR GO]

This document describes the implementation of Race Director Go with a beginning to end example.

# Race Director Go

## Getting Started Guide

### Contents

Intro .....	3
1 - Race Director Go Setup.....	3
Combining Race Director Divisions .....	3
Creating the Race at RSU .....	4
Participant Adds/Changes.....	6
Results Credits.....	6
Notifications.....	6
Links .....	7
2 - Uploading New Participants .....	8
Teams.....	8
Live Mode.....	8
Participant Data Uploads .....	9
3 -Participant ID Labels with QR Codes (optional).....	11
QR Codes Created by Bib Number Supplier .....	11
QR Coded Produced on Race Director Participant ID Labels .....	11
4 - Uploading Results .....	14
Basic Flow.....	14
RSU Events .....	14
Results Publishing .....	15
Age Groups and Top Finishers .....	16
Displaying Team Name .....	19
5 - Race Director Kiosk Integration .....	20

# Race Director Go

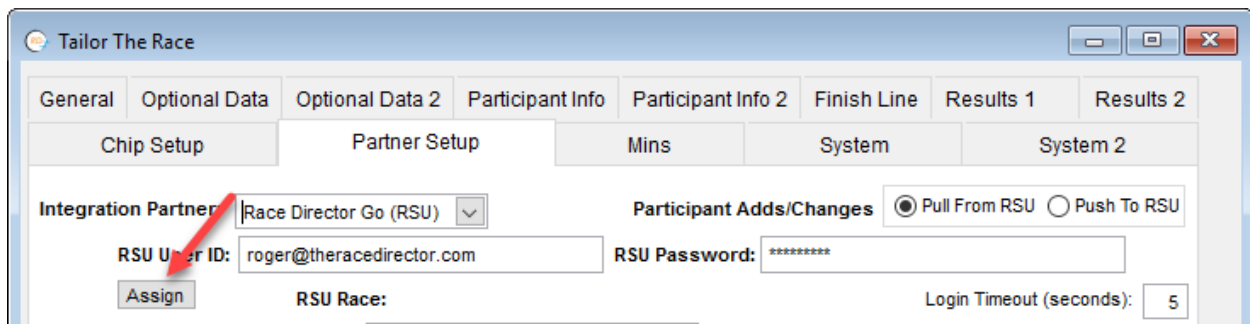
## Getting Started Guide

### Intro

This document takes you through an example of a race where you wish to incorporate live results into your event using Race Director Go. Race Director Go gives you all of the features of Run Sign Up results, but without the requirement that you use Run Sign Up as your source of registration data. There are only 3 basic steps in the process - setup, maintaining participant data and live results publishing. Optionally, you can also produce participant ID labels that include a QR code for scanning directly to an individual level URL for a personal smart-phone result.

### 1 - Race Director Go Setup

In Tailor -> Options, go to the Partner Setup screen and select Race Director Go as the Integration Partner. Enter your Run Sign Up User ID and Password and use the "Assign" button. If you do not have a user account at Run Sign Up, you will see a link for creating a user account.



The screenshot shows the 'Tailor The Race' application window. The 'Partner Setup' tab is active. The 'Integration Partner' dropdown menu is set to 'Race Director Go (RSU)'. The 'RSU User ID' field contains the email address 'roger@theracedirector.com'. The 'RSU Password' field contains a masked password '\*\*\*\*\*'. The 'Participant Adds/Changes' section has two radio buttons: 'Pull From RSU' (selected) and 'Push To RSU'. The 'Assign' button is highlighted with a red arrow. The 'Login Timeout (seconds)' field is set to '5'.

### Combining Race Director Divisions

Occasionally, you will have multiple divisions in Race Director for registration purposes, but for results reporting, you will want these multiple divisions combined. In the race shown in this flow, there are some examples of linked divisions. Combining divisions into a single "result set" at RSU is done using the Race Director "Linked Divisions" capability. It is best if you do the linking prior to setting up the race at RSU. Below is an example of how we've linked division 2 to division 1.

# Race Director Go

## Getting Started Guide

**Current Divisions**

- 101k Age Group
- 101k Cancer
- 101k Special Categories
- 101k Para Cyclist

(Click to select) Participant Count: 24

**Finish Results**

Male Winner: Sakkie Meyer  
2:47:27.91

Female Winner: Patricia Ross  
4:24:36.16

Total Finishers: 23

How should age group descriptions default?  
 Male / Female  Men / Women  Other

Setup Events  
Update Age Groups...  
Segments... Segment Count: 2  
List Divisions...  
Set Top Finishers...  
Process Crossovers...  
Set Wave Times

Division Number: 2 Short Name: CAN

Division Name: 101k Cancer

Distance: 101.00 Miles  KM  Rate

Event: 2015 Forrest GrapeRide

Min Finish Time: 00:00:00.00 Result ID:

Wave Offset: 02:33:40.75 Max Start: 00:00:00.00

Wave Start Quarantine Division Only from div:

Wave Group: 5

Top Finisher Only Division  Open Only

Team Relay Division Settings

Linked Division (see help) Related Division: 1

Age Grade Factors

Save Revert Delete Help Close

### Creating the Race at RSU

Since, in our example, the race has not been created at RSU, you can create it directly from the "Assign" screen by entering the information on the right side of that screen and using the "Add Current..." button. When using this process, be sure you've created all of the RD Divisions you intend to use for this race as this process will automatically create corresponding RSU Events.

Select the Race from the list below -

Race ID	Race Name	Race Date
15106	Sgt. Preston, Yukon King Run	01/01/2015
16958	Stage 1	01/17/2015
16959	2015 Fullers Wharf to Wharf	01/17/2015
16960	2015 Blue Lake Multisport Festival - Sunday	01/25/2015
17022	Komen South Florida Race for the Cure	01/31/2015
18205	Fall Creek Falls 50K and Half Marathon 2015	03/15/2015
18285	St Patrick's Day 5K - Wichita	03/14/2015
18292	Run To The Pub 10k	03/14/2015
19246	Mercer Island Rotary	03/22/2015
19765	Louisville Sports Commission	04/15/2015
19994	2015 Bridge Run	04/09/2015
20225	Indiana Trail 100	04/25/2015
20326	ACDS 5K and Fun Run for Service Learning	04/18/2015
20595	Texas Kids Tri	04/25/2015

Search For: [ ] Reset

Race List URL: [Race Director Go Login](#)

**Add This Race**

Race Name: Forrest GrapeRide

Address: 101 Main

City: Fremont

State: MI

Zip: 49412 Country: US

Time Zone: America/New\_York

URL: ForrestGrapeRide

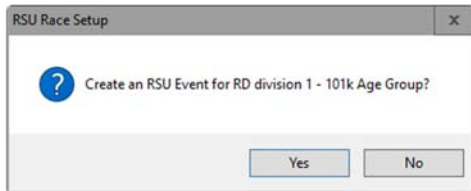
Add Current Race to RSU Cancel

# Race Director Go

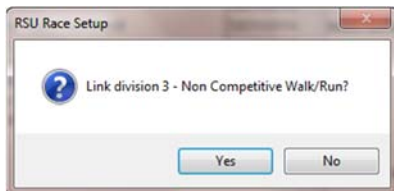
## Getting Started Guide

URL - this is only the tail end of what will become a full URL. For example, if the name of your race is "The Fremont Frostbite 5K and 10K", consider a URL something along the lines of "fremontfrostbite". The "Auto" button will create one for you - constructed from your race name.

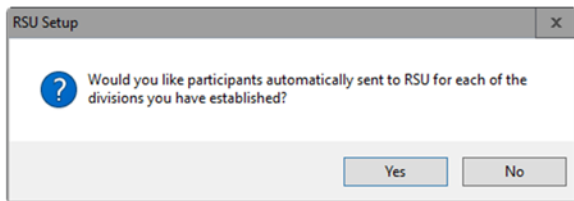
As you are setting up the race, answer "Yes" for every RD Division that you want activated for live results.



Answer "No" for any RD Division that you do not want included when publishing live results.



You will receive a prompt once all divisions are mapped asking if you want participants loaded.

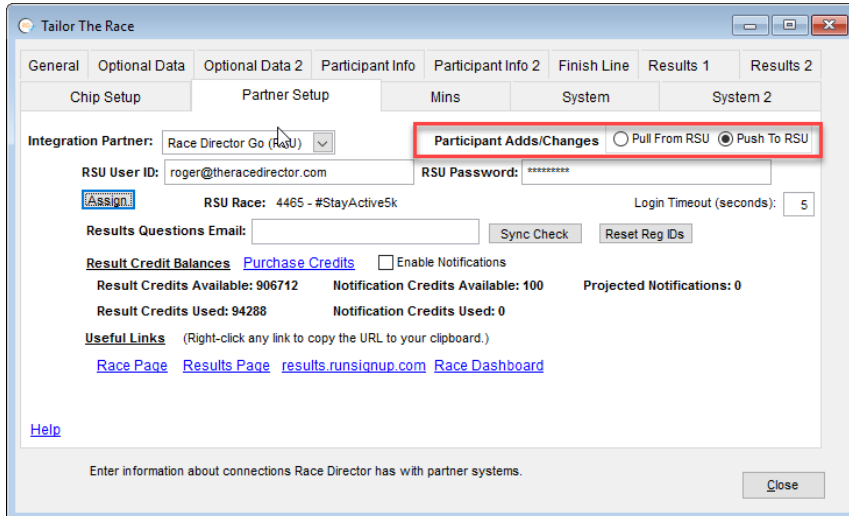


This process will also create any relay or aggregate teams that you have defined. Additional participants or participant data changes can be uploaded from the Update -> Participants screen - which is covered later in this document.

# Race Director Go

## Getting Started Guide

When you are returned to the Partner Setup screen, you'll notice some additional information.



### Participant Adds/Changes

This setting is critical to defining the data flow direction between Race Director and RSU. This setting should remain unchanged unless RSU race day tools such as the check-in kiosks are used. With this setting in "Push" mode, you will not be allowed to use the Race Director / RSU integration for importing participant data from RSU. If this setting is changed to "Pull" mode on race day to make use of RSU check-in functions, you will receive warnings if you attempt adding or changing data in Race Director.

### Results Credits

You will see your credit balances for both Results and Notifications. Use the "Purchase Credits" link if there are fewer result credits than the number of finishers you expect across the divisions you're publishing live results for. If you're enabling Notifications, make sure your Notification credit balance is high enough to cover the number of participants that sign up for notifications.

### Notifications

If you're going to allow notifications (text messages), participants must go through a sign-up process. The link for this is shown just to the right of the setting. If you right-click on this link, the URL needed for notifications is copied to your clipboard. You must provide this link on the race website or via email to the participants. At the bottom of this page is an "Embed" link -



## Race Director Go

### Getting Started Guide

When you select this, it gives you the exact HTML syntax needed for including an embedded link for notifications on the race website.

#### Links

The links for the Race Director Go Race page and Race Results page are also given. A right-click on either link send the URL to your computer's clipboard for copying to your web page or participant email message. Using the "Race Dashboard" link will take you directly to the RSU Race Dashboard.

If you are unfamiliar with how to do additional configuration of a Run Sign Up race (adding a race logo for instance), they can be contacted via email to give you a general orientation - <mailto:info@runsignup.com>.

# Race Director Go

## Getting Started Guide

### 2 - Uploading New Participants

Looking at the Race Page for this race, we see the single RD division for this simple race which we included when adding this race. At RSU a division is listed as a RSU Event -

#### Events

EVENT	TIME	PRICE	DETAILS
5k	12:00AM EST	N/A	

If we switch to the Dashboard for this race, we'll see there are no registered participants.



*This race is not currently processing transactions. Please enter payment information in the race wizard.*

February 11, 2017 | Fremont, MI 49412

Participants: THIS YEAR: **170**

DATA

BREAKDOWN

### Teams

Teams are managed at RSU by "Group Type". For team relay, there will be a RSU Group Type for every Race Director Relay Division. For standard teams (managed in Tailor -> Teams), there will be a RSU Group Type for every Team Classification.

### Live Mode

Since there will never be registrations created at RSU for this race, the participant data setting on the Partner Setup tab in Tailor -> Options should always be set on "Push to RSU".

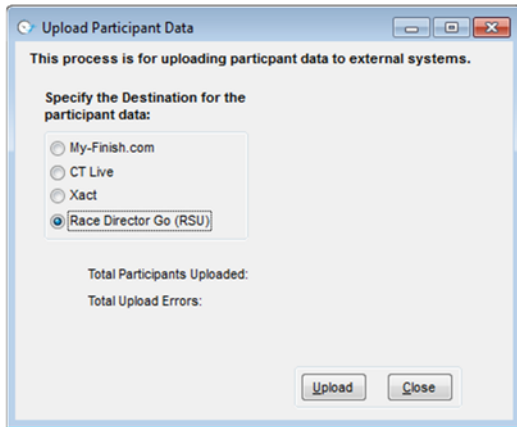


# Race Director Go

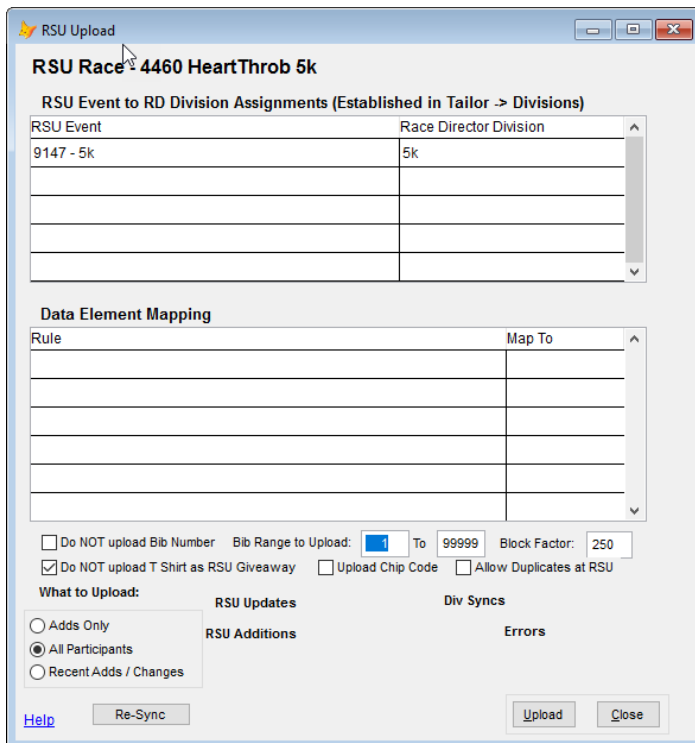
## Getting Started Guide

### Participant Data Uploads

If you are not using Live Mode or you have imported participant data from other sources since the race has been established at RSU, you can use the "Upload" button from the task bar in Update -> Participants to send participant data in bulk to RSU.



At the top of the next screen you'll see the RD Divisions and the RSU Events that are aligned with them. Use the setting for not uploading the T-Shirt sizes as RSU Giveaways.



## Race Director Go

### Getting Started Guide

The upload screen is designed to pick up where the last upload left off - so this process can be run daily (or more often) in the days / weeks leading up to the race.

# Race Director Go

## Getting Started Guide

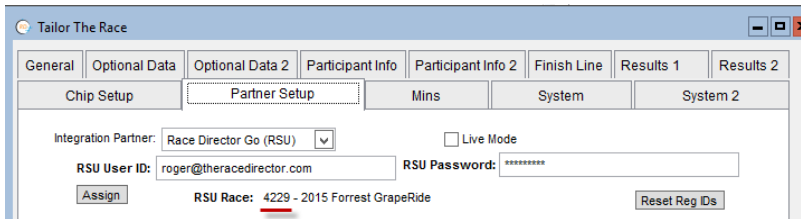
### 3 -Participant ID Labels with QR Codes (optional)

#### QR Codes Created by Bib Number Supplier

If you want to provide each participant with a QR Code, the best practice is to have the bib number supplier print this directly on the bibs. To do so, they will require the details of the URL (below). When you provide the URL, replace the "rrrrr" you see in the example below with the Race Director Go race number. Also, instruct the supplier to replace "bbbb" with the corresponding bib number.

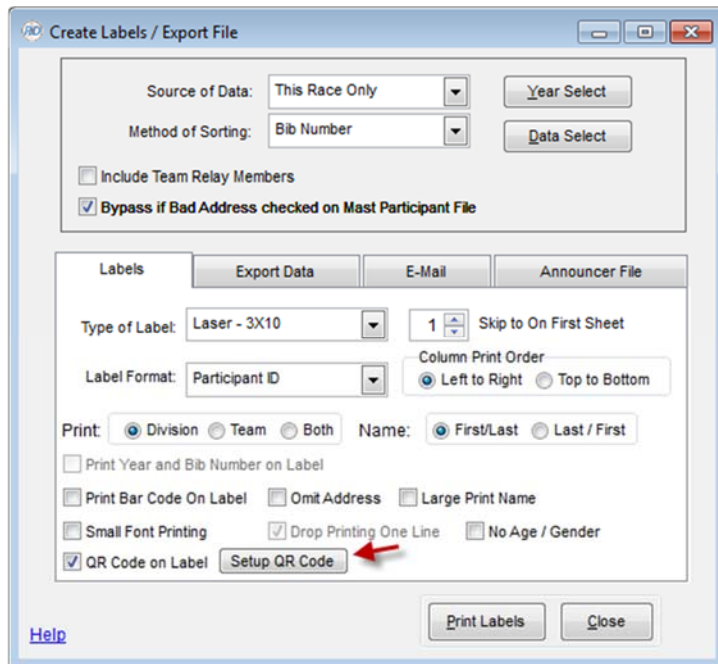
<https://runsignup.com/Race/Results/rrrrr/IndividualResult#bbbb>

For this race, "rrrrr" would be replaced with 4229.



#### QR Coded Produced on Race Director Participant ID Labels

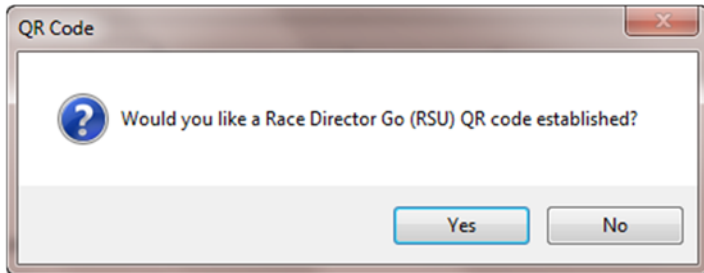
The setup shown below will produce a Participant ID Label in Race Director that includes a QR code.



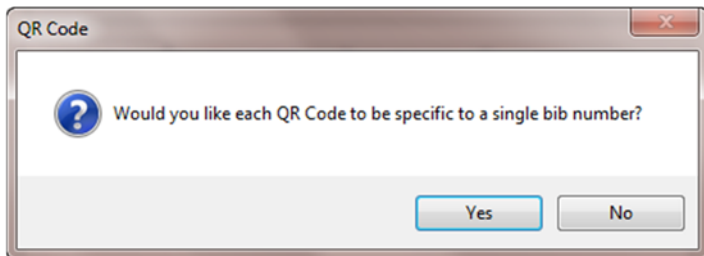
# Race Director Go

## Getting Started Guide

When using the "Setup QR Code" button you will encounter a couple of prompts. Answer "Yes" to the first prompt -



For the second prompt -



# Race Director Go

## Getting Started Guide

Yes - This will produce a QR code that is programmed to take the participant directly to their own personal result. Below is a sample of what it might look like on a smart phone.

Denise Mottley - #577 ×  
2 Mile Walk  
Female, Age 43, Suffolk VA

**FINISH TIME**

34:05.7

Chip Time      Clock Time  
34:05.7      34:11.48

Pace  
17:02

[VIEW CERTIFICATE](#)

Overall: 8 of 14      Female Walkers: 6 of 10

<b>.5 Mile</b> 9:27.09 18:54	<b>1 Mile</b> 8:02.79 16:05
<b>1.5 Mile</b> 8:51.26 17:42	<b>2 Mile</b> 7:44.56 15:29

If you answer "No" - This will produce a QR code that is programmed to take the participant to a page designed specifically for the Event (RD Division) that they are registered in. See the example below.

2014 ▼

2 Mile Walk ▼

All Results ▼

SEARCH      [Advanced](#)

Place	Bib	Name	Gender	City	Sta
1	635	Scott Stakes ×	M	Portsmouth	VA
2	608	Rick Craven ×	M	Virginia Beach	VA
3	619	Kim Tolbert-Pimento ×	F	Chesapeake	VA

# Race Director Go

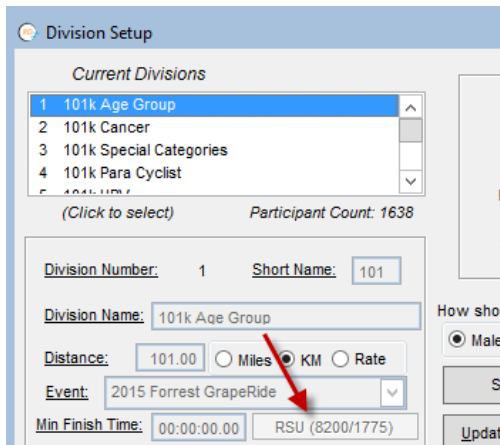
## Getting Started Guide

### 4 - Uploading Results

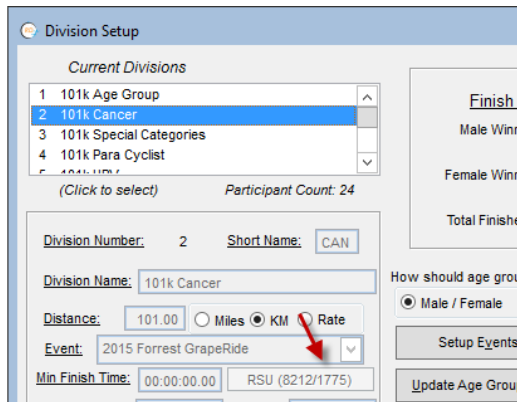
#### Basic Flow

##### RSU Events

There are important Race Director to RSU linkages shown on the Tailor -> Divisions screen. The first number refers to the RSU Event ID and the second is the RSU Results ID. Usually, there will be a unique set of numbers for each RD division.



The exception is when Linked Divisions are used in Race Director. In this example, we have division 2 linked to division 1, so when we look at division 2, we'll have a different Event Number, but the same Results ID.

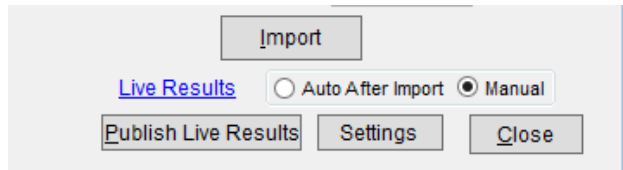


# Race Director Go

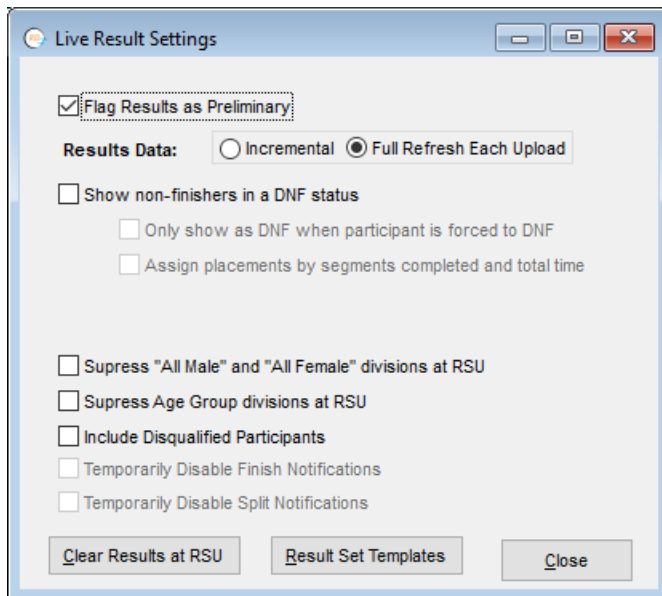
## Getting Started Guide

### Results Publishing

The results upload is designed to be entirely imbedded into standard RD results entry processes. When you go to the chip results import screen, use the Settings button to manage how the upload is processed.



On the next screen you manage these settings.



**Preliminary** - Use this setting if you want the result set sent to RSD to be flagged as "Preliminary Results".

**Results Data** – Incremental mode results in faster publishing cycles in very large races. In Incremental mode, the data sent during the results publishing cycle is only the new results since the last time the publishing happened. If number of participants is fewer than 500 not much is gained and it's recommended that you keep this setting on Full Refresh. When using the Incremental mode while the race is ongoing, it's highly recommended you change this setting to Full and do a final publish after the last results have been imported.

**DNF** - This setting only applies to multiple segment races. When the setting is on, anyone completing at least one split will have a result sent to RSU. If the participant does not have a finish result, there will be no overall, gender, age group ranking assigned, but all completed split times will be reported. If you

# Race Director Go

## Getting Started Guide

wish to how the non-finishers in order by the number of splits and time, you must use the setting to assign a placement to non finishers.

**Suppress Settings** – If you do not want to track finish placement by gender at RSU, there is a setting for this. You can also suppress the Age Group placement from showing at RSU. You must have the setting on to show results for participants that you have disqualified in Race Director.

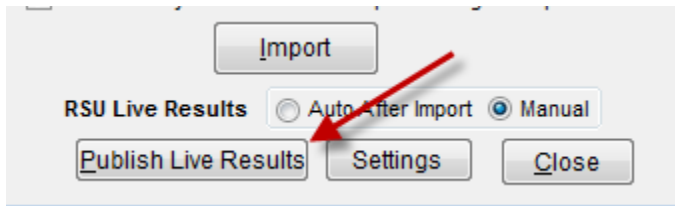
**Notifications** – If you publish results on race day prior to the race, it's recommended that you disable the sending of Notifications. These settings will not be enabled for races where you do not have RSU notifications activated. If you attempt to republish results on any date after the race date, you will get a prompt in Race Director asking if you want notifications disabled.

**Clear Results at RSU** – Use this to clear away any results used in testing before the live event.

**Result Set Templates** – Used to define the columns shown on the result finish list.

Back on the Chip Results Import screen, the setting "Auto After Import" is the most efficient. You do nothing else beyond doing your normal results import. At the end of each import, the calculated placements, times and paces are automatically posted to the RSU server.

If you switch the setting to "Manual", you're given a button so that you can send the results on your own schedule -



### Age Groups and Top Finishers

What we configure in Race Director for Age Groups and Top Finishers become Divisions at RSU. What you see when you run the RD Age Group report should match perfectly with how you see Division finishers at RSU.

For Age Groups, this setting is critical in the integration -



# Race Director Go

## Getting Started Guide

Age Group Setup Screen

5k Run Age Groupings

Selected Age Group No - 7 Gender M

Age Range: 30 To: 34

Description: Male 30 to 34

Record Holder -

Year: 2007 Time: 00:17:05.55

L. Name: Gerry

F. Name: Josh

Number of Awards: 3 (Count) Options

It determines how many show in the division list at RSU.

### Male 30 to 34

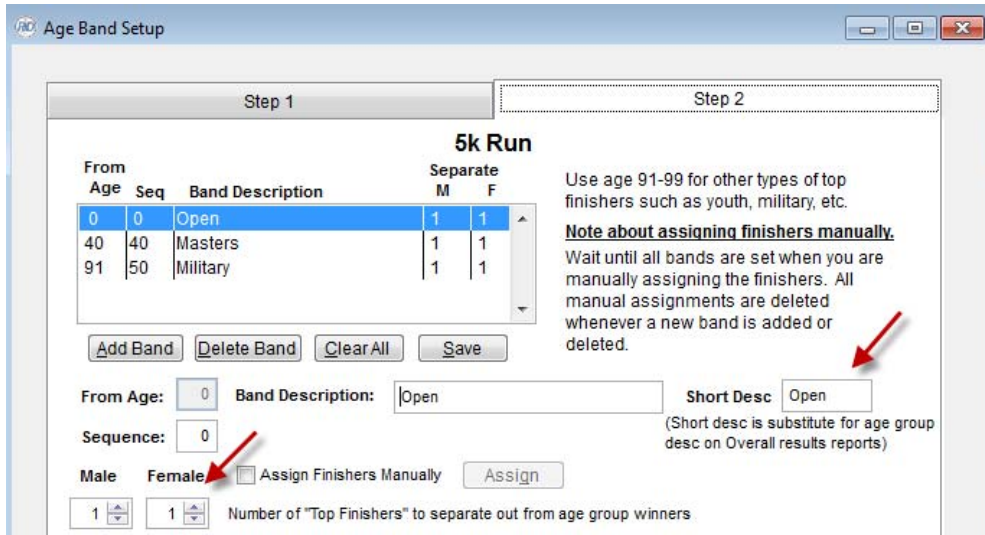
Place	Overall	Bib	Name	Age	Gender	Location	Time
1	30	474	Caleb Currie	36	M	Portland OR US	18:37.45
2	36	972	Scooter Delong	38	M	Saint Joseph MI US	19:04.68
3	40	366	Matt Small	39	M	South Haven MI US	19:15.5

### Male 35 to 39

For Top Finishers, the short description is important for how the band is identified in the RSU finish list and the male / female setting drives the number that show in the division detail.

# Race Director Go

## Getting Started Guide



Double dipping is allowed, but when you use this, full results must be sent to RSU with each upload (Incremental is now allowed).



Finish List at RSU with double dipping -

Place	Bib	Name	Gender	City	State	Country	Clock Time	Chip Time	Pace	Age	Age Percentage	Division Place	Division
1	151	Tad Hulst	M	Zeeland	MI		15:41.02	15:40.45	5:02	29	82.4	1	M Open M 20-24
2	372	Joe McAvoy	M	Hillsdale	MI		16:19.66	16:19.39	5:15	24	79.0	1	M 15-19
3	652	Richard Bauer	M	Holland	MI	US	16:55.03	16:52.96	5:26	35	78.1	1	M 25-29
4	569	Robert Duerksen	M	Ann Arbor	MI	US	17:01.99	17:00.62	5:28	54	89.6	1	M Master M 45-49
5	528	Kyle Overway	M	Logansport	IN	US	17:11.87	17:11.47	5:31	21	75.3	2	M 15-19
6	566	Craig Sauers	M	La Porte	IN	US	17:31.47	17:29.98	5:37	29	73.8	2	M 20-24

# Race Director Go

## Getting Started Guide

### Displaying Team Name

When uploading results to Race Director Go, Race Director will publish the team name with each participant that is entered on a team. A team name will be uploaded regardless what type of team race you are scoring (relay or traditional teams).

Place	Bib	Name	Gender	City	State	Chip Time	Gun Time	Pace	Age	Division	Division Place	Team Name
1	525	Harlan Lopez	M	Walnut Creek	CA	26:05.4	26:06.06	5:13	28	M 19-39	1	
2	504	Nate Beach	M	Lafayette	CA	26:10.73	26:10.79	5:14	24	M 19-39	2	
3	66	Aidan Goltra	M	Walnut Creek	CA	26:46.38	26:46.74	5:21	18	M 1-18	1	Moraga Project
4	67	Rod Farvard	M	Moraga	CA	28:51.59	28:51.98	5:46	18	M 1-18	2	Moraga Project
5	601	Ollie Ehlinger	M	Berkeley	CA	29:48.02	29:49.09	5:57	28	M 19-39	3	
6	172	Kevin Buckley	M	Moraga	CA	29:51.54	29:53.71	5:58	17	M 1-18	3	Campo XC
7	403	Nathaniel Sauerberg	M	Moraga	CA	30:17.11	30:19.56	6:03	16	M 1-18	4	Campo XC
8	427	Charlie Thimesch	M	Walnut creek	CA	30:25.28	30:25.54	6:05	19	M 19-39	4	
9	161	Jonathan Semenza	M	Moraga	CA	30:37.02	30:39.05	6:07	16	M 1-18	5	Campo XC
10	392	Sean Pappa	M	Moraga	CA	30:51.42	30:53.38	6:10	17	M 1-18	6	Campo XC

# Race Director Go

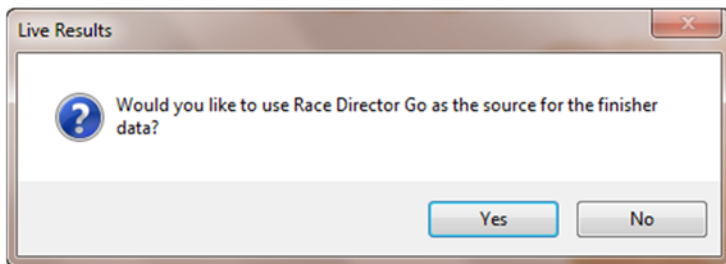
## Getting Started Guide

### 5 - Race Director Kiosk Integration

If you are a user of the Race Director Kiosk screens, these screens can connect directly to Race Director Go for both participant information and results. It is not necessary for the kiosk computers to be networked to the Race Director scoring computer - but, it's required that these computers have an Internet connection.

It is important that you have basic race tailoring set on the kiosk computers (Divisions, Age Groups, etc), but it is not necessary for the kiosk computers to have all participants loaded. This allows you to get the kiosk computers set up early on the day of the race - even prior to having race day registrations entered. Restore the race backup onto the kiosk computers and they are ready to go.

When you start up the Kiosk screen, you will see the prompt shown below.



From this point on all participant and results data will be pulled directly from the RSU servers that host Race Director Go. All participant updates (adds and changes) as well as results entered on the scoring computer are uploaded naturally to Race Director Go. The kiosk computers are able to make use of this updated data immediately after the scoring computer does the posting.