

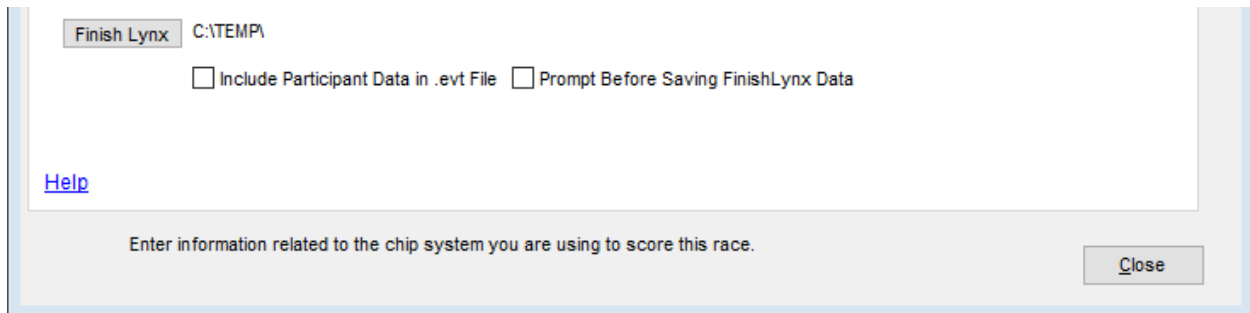
FinishLynx + Race Director

Many cross country meets utilize a FinishLynx photo finish camera as a backup in the event of a close finish. Using Race Director's chip results override screen, you may easily override any places/times that your chip system may have recorded incorrectly.

Creating Finish Lynx Files:

Race Director will automatically create PPL, EVT and SCH files needed by the FinishLynx system. These files **should be placed in the directory that you are targeting your database from within FinishLynx.**

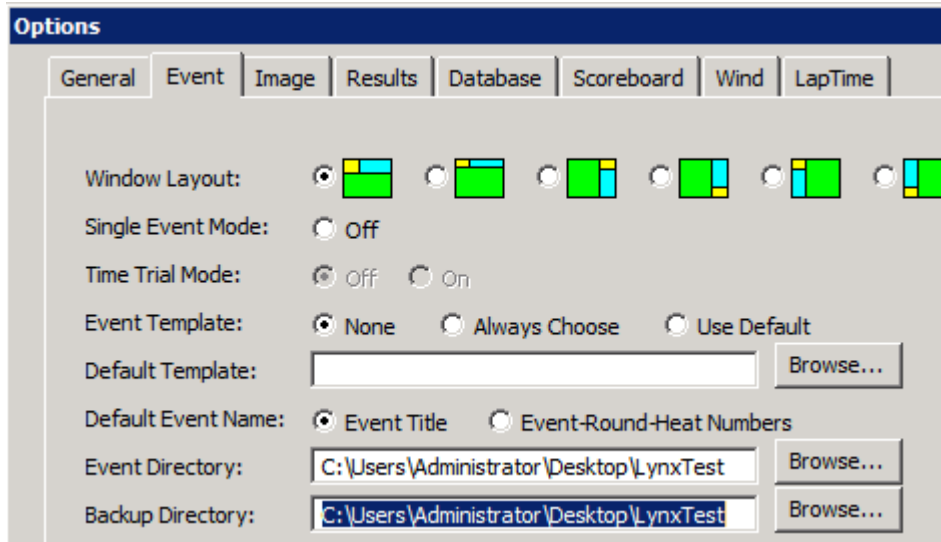
To establish that you would like these files created, use the Finish Lynx button in Tailor -> Options on the Chip Setup tab. Each time you exit Tailor -> Options, Tailor -> Divisions, Tailor -> Teams or Update -> Participants, these three files will be automatically updated.



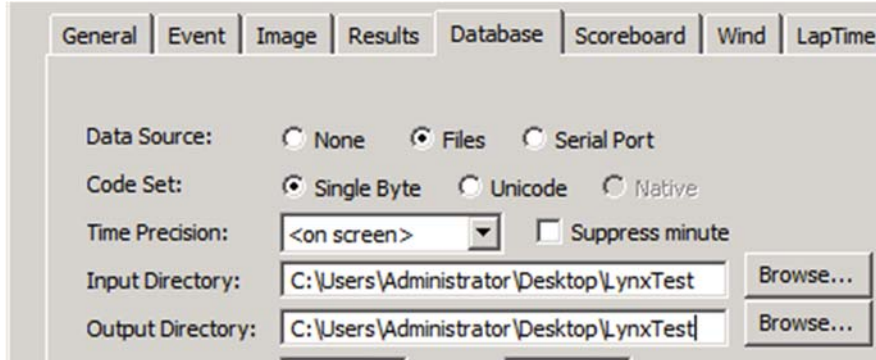
The screenshot shows a dialog box titled "Finish Lynx" with the path "C:\TEMP\" displayed. It contains two unchecked checkboxes: "Include Participant Data in .evt File" and "Prompt Before Saving FinishLynx Data". A blue "Help" link is located in the bottom left corner. At the bottom of the dialog, there is a text field with the placeholder text "Enter information related to the chip system you are using to score this race." and a "Close" button in the bottom right corner.

Load Data into FinishLynx:

Under File > Options (within FinishLynx), ensure that the directory you specify is the directory that you saved your PPL file to:



Repeat this process for the "database" tab:



Processing Times:

As you process times within FinishLynx, you'll want to match the athletes up by their bib number. It's important to remember that anytime captured within FinishLynx will override your chip system time.

Place	Id	Lane	First Name	Last Name	Affiliation	Time	Delta Time
1	209		Kennedy	Almogela		12:48.23	12:48.23
2	210		Rebecca	Almogela		13:23.23	35.00

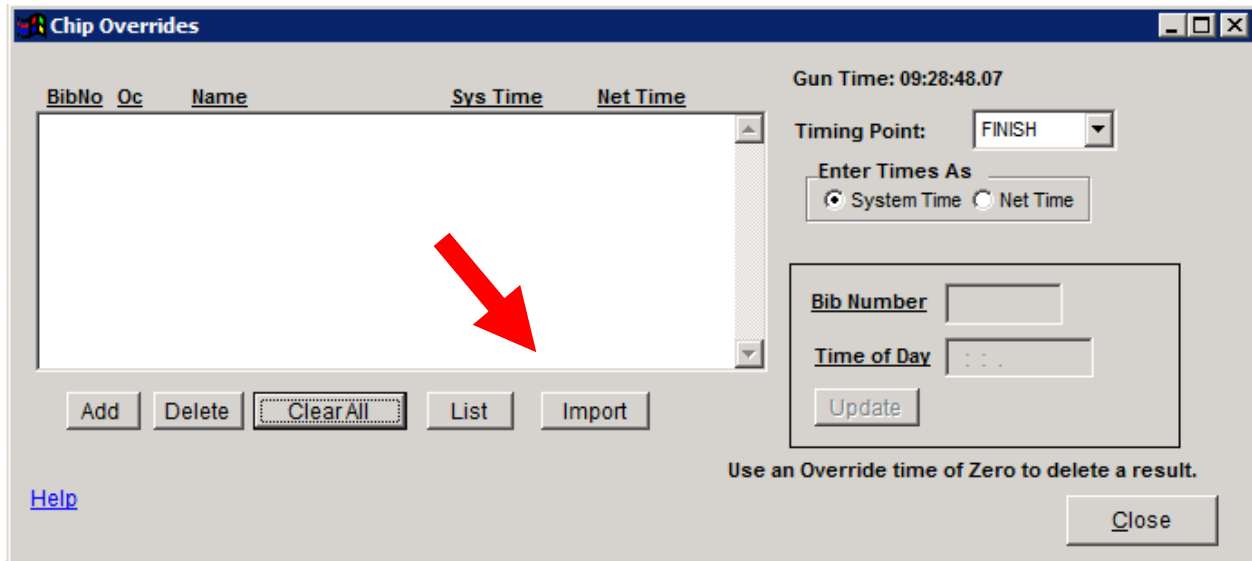
Save the LIF file:

Within FinishLynx go to File > Save. Lynx will create three (or four depending how many cameras you are using) files. The LIF file will contain all the times from a race that you'd like to import into Race Director.

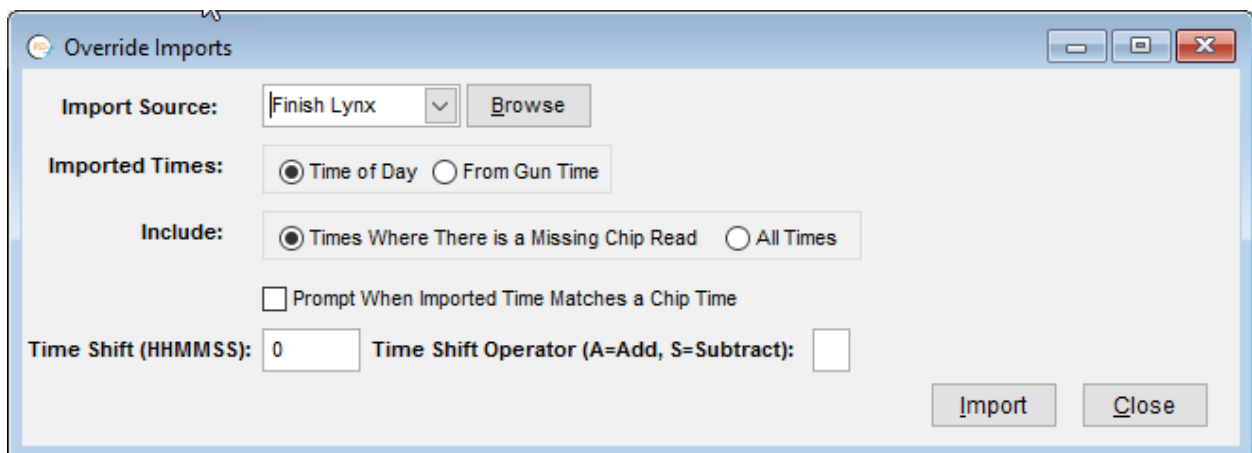
Importing times into Race Director:

Data captured using FinishLynx is treated as an override within Race Director. This enables you to easily break ties and keep additional chip records should you desire to. The example below assumes that you captured chip reads for 498 of the 500 finishers in a race. Your FinishLynx system has .LIF data for many of the finishers, including the two missed by your chip system.

From Enter Results > Chip Results > Overrides, select "Import"



On the next screen, select "Finish Lynx" as your source of data.



If a gun time was used within FinishLynx, select "Gun Time", otherwise select "Time of Day":

The “Include” setting is most typically set such that you’re only interested in reads from the Finish Lynx systems where you didn’t collect a read from your chip system.

After using the Import button, select the .LIF file within the directory you specified.

Our two overrides are now in Race Director.

