

Steps to make a ChronoStore connection between Race Director and Simple Client

First, in Race Director, go to Enter Results – Chip Systems – ChronoStore. So that Race Director can access timing data via ChronoStore, Simple Client allows a connection from an outside source (such as Race Director) through a specific port on your computer – 61611. But, it will only allow this connection if you establish a user ID and password. This is a different ID and password than the one you use to connect to the ChronoTrack CCS server. On the Race Director ChronoStore screen, you can add this User ID and Password and Race Director stores it in a place accessible by Simple Client. So, in my case, I added this user – but you can use whatever you wish.

User	Password
roger	roger

Next add your event. The idea here is to name your event to match how it will be defined in SimpleClient. In this case, the event name is KEIVFF:

Event	Race	Connection String	Times	Gun Times
KEIVFF	016	C:\WINRACE\CT_MASTER\KEIVFF\	0	0

Next, add the point you will connect to - Race Director refers to this as the "Location". This should exactly match how the point is named in SimpleClient.

Location	Type	Times	Gun Times
FIN	Finish	0	0

[Help](#)

Location Maintenance

Name

Type **Ignore Time Under**

Next, use the "Connect" button.



At the bottom of your screen, you should see:

C:\WINRACE\FILES\ ChronoStore Active

At this point, you can close the ChronoStore screen and you should continue to see the message about "ChronoStore Active". Minimize Race Director so that it's still running, but you can get back to your computer's Desktop.

Next Race Director needs to connect to SimpleClient. The assumption is that you have SimpleClient connected directly to your equipment or you have a connection from the equipment to the CCS server and Simple client connected to CCS. In the example below, it's showing as if you had a connection with the CCS server.

In this case the CCS Server Event is KEIVFF and point FIN :

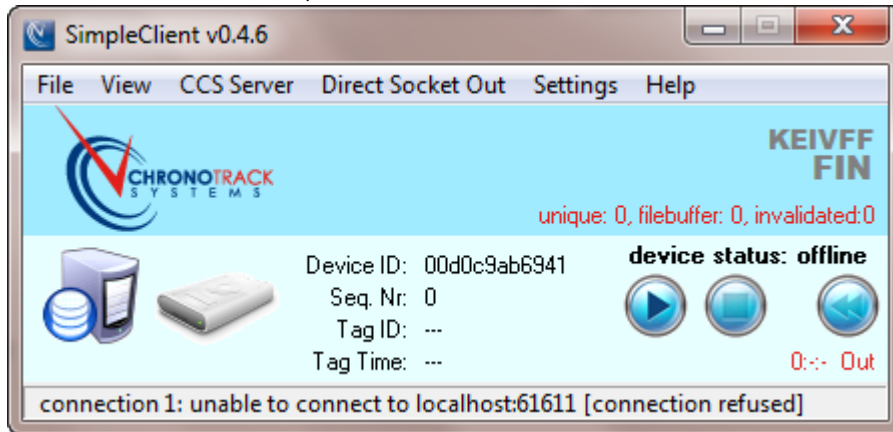
SimpleClient::Select Device Session

Event Name: - ALL EVENTS - - ALL POINTS - All events

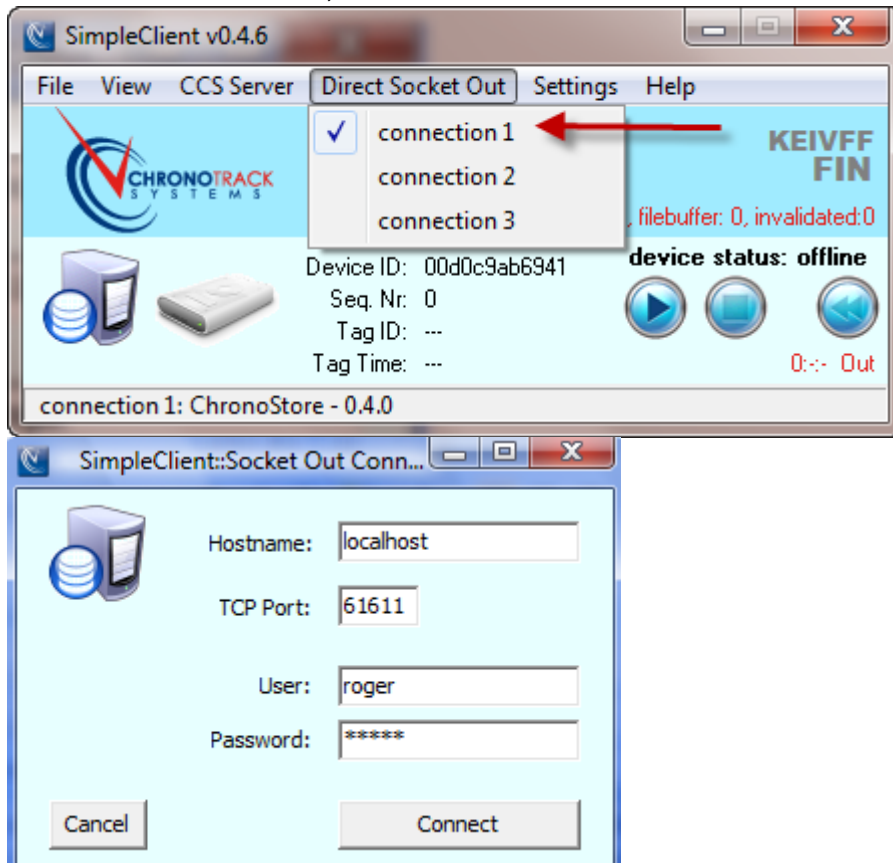
id	device id	event	point	start date	session	device stat
31669	00d0c9ab6941	KEIPw5K	SPLIT	01:55:49 9/11	closed	offline
32486	00d0c9ab6941	KEIVFF	FINB	16:12:37 9/11	closed	offline
32487	00d0c9ab6941	KEIVFF	START	16:12:37 9/11	closed	offline
32537	00d0c9ab6941	KEIVFF	1MFIN	18:04:15 9/11	open	offline
32536	00d0c9ab6941	KEIVFF	1MSTART	18:00:48 9/11	closed	offline
32509	00d0c9ab6941	KEIVFF	FIN	16:51:40 9/11	closed	offline
31752	00190F04C924	KOH2011	TFINISH	16:08:31 9/3/11	closed	offline
31787	00190F04C924	KOH2011	TFINISH	17:30:07 9/3/11	open	offline

Activate Tag Range Filtering Ranges for Event: KEIVFF Tag Prefixes...

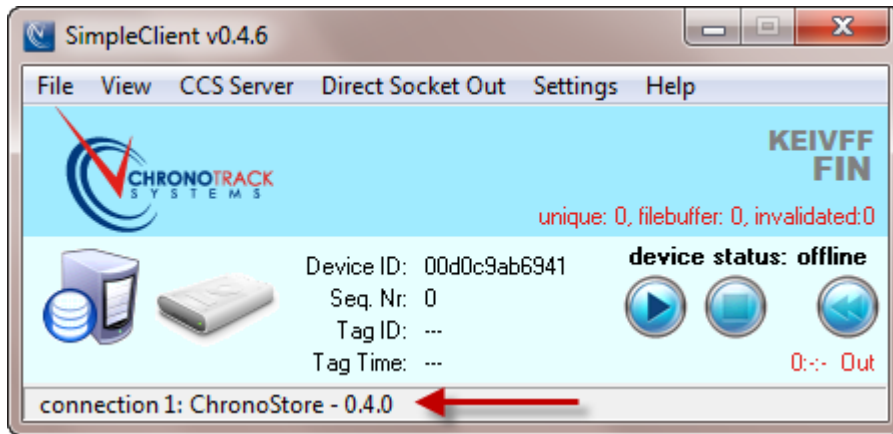
After we select the event, we see:



To connect to ChronoStore, use Connection 1 from the Direct Socket Out menu.

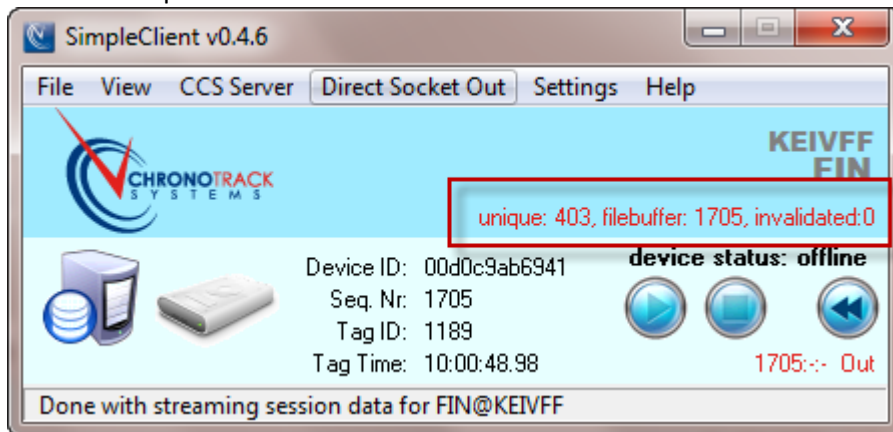


When you enter your ID and password, it is case sensitive so be sure to enter this the same way you had it in Race Director. Once you select "Connect", you should see this:



If you do not get a connection, your computer's firewall may have a restriction on this port that you will need to lift.

Once the reads start, you will see a counter in SimpleClient. In this case, there have been 1,705 reads, with 403 unique bib numbers.



The final step is to import these times into Race Director. When you go to Enter Results -> Chip Results, you will see this indication that times exist for the Timing Point you're attempting the import for.

Timing Point: Finish

On multiple start times, use FIRST time instead of LAST time.

Distance Check Dist: 0.00 Switch to Div:

ChronoStore Times Exist

Automatically Clear times before processing the import

Import

When you start the import using the "Import" button, you're given the choice to use these time -

Chip Results Import

Direct ChronoTrack times exist. Use these times?

Yes No